

12/24V DC Circulation Pump

Special for car, truck, bus, vehicle, yacht

Flow up to 25L/min
Temp. sustain -40~120°C
Peak voltage applicable
Vibration endurable



Specifications

Rated Voltage: 12V / 24V

Max Flow Rate: 23 L/Min / 25L/Min

Max Water Head: 2.2M / 2.5M

20mm Inlet/Outlet (be accordance with specialized car equipment)

Working temperature: **-40°C~120°C** (104~248° F)

Low noise: ≤50dB far from 1m distance

Features

- ◇DC brushless motor with long lifetime
- ◇Heavy duty work, can sustain continual 24 hours
- ◇Sustain -40~120°C, suitable for extreme outdoor environment
- ◇Durable permanent magnetic rotor/impeller & fine ceramic shaft
- ◇Advanced magnetic drive technology for static-impeller, without any leakage for ever
- ◇The motor with big machine movement optimization design, has very low temp rise
- ◇Automatic polarity protection, overload protection, block protection
- ◇special design to meet car vibration working condition
- ◇special design to meet car power supplying way which occur high peak voltage or unstable voltage
- ◇Equipped with specializing car water-against connector
- ◇Applied liquid: pure water, antifreeze solution
- ◇IP protection level : IP 67
- ◇Low or no maintenance
- ◇Low power consumption



Areas of use

- Car engine cooling circulation
- Car engine pre-heating
- Heating system (Car Auxiliary heaters & parking heaters)
- Electric vehicles water circulation system
- Normal Hot Water Circulation
- Liquid Transfer
- General Purpose Pumping



US Solar Pumps TA50 Series



Core competence:

Mechatronics and system integration.

Our micro pump manufacturer is well known for their outstanding quality and efficiency. When developing this new product, they focus on the needs and demands of our customers. This provides market-specific solutions for our Original Equipment partners.

Real car engine heating system is simulated to ensure that our pumps are optimally tailored to the specific vehicle system.



The benefit to the customers:

With 20mm Inlet/Outlet standard car connection and specialized water-proof connector, then the pumps can be quickly and efficiently integrated into vehicles.

With $-40^{\circ}\text{C}\sim 120^{\circ}\text{C}$ ($104\sim 248^{\circ}\text{F}$) working temperature, our TA50 engine pre-heating & parking heater pumps provide the vehicles an efficient working environment even at extreme outdoor temperatures and in bad weather conditions.

Special design to meet car vibration working requirement, car power supplying way which occur peak voltage or unstable voltage.

Special design to meet car power supplying way which occur high peak voltage or unstable voltage

With polarity protection function, then the pump will not burned by wrong wiring.



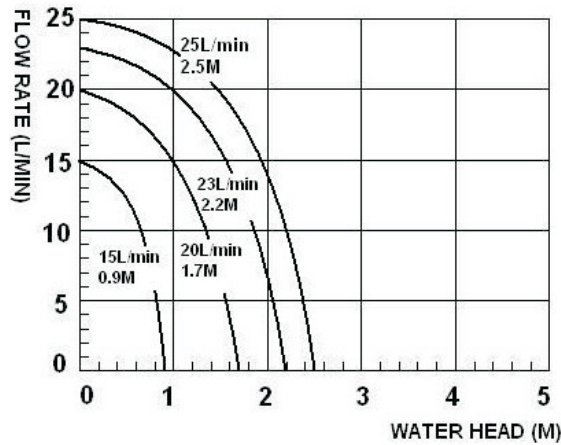
Application

The TA50 series DC pump can be used for most vehicle engine circulation applications. It is characterized by its unique design & specialty, high efficiency, low consumption & stable performance. The long life brushless motor technology provides maintenance free and quiet service life. This pump is perfect for car engine circulation, pre-heating, parking-heating or any circulation pump application where normal circulation pump is not available.

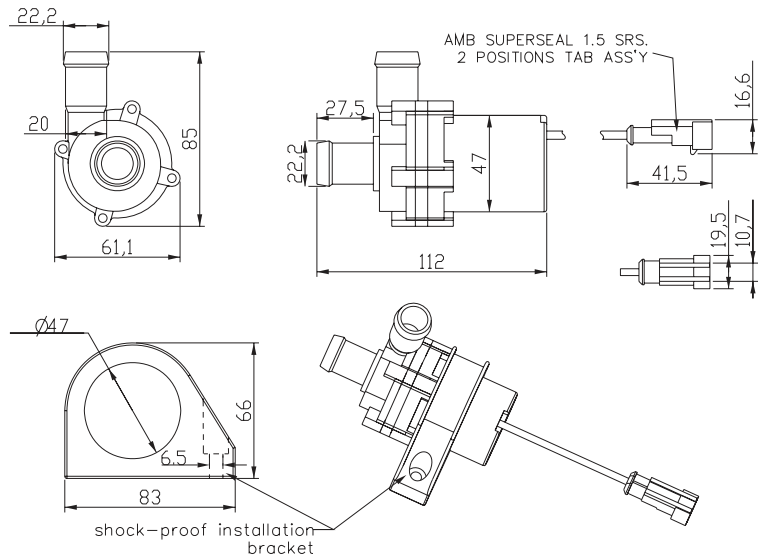
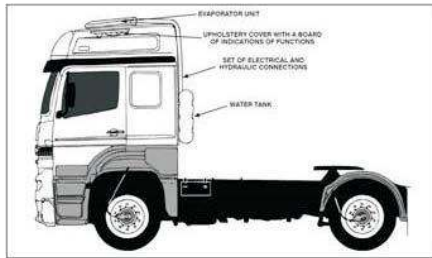
Models

Product Code	Max Flow Rate(L/M)	Rate Voltage (DC)	Current(A)	Max Water head (M)	Power (W)
TA50-12-1501	15L	12V	0.5	1	6
TA50-12-2002	20L	12V	1	2	12
TA50-12-2502	25L	12V	1.1	2.5	13.5
TA50-24-1501	15L	24V	0.2	1	5
TA50-24-2002	20L	24V	0.5	2	12
TA50-24-2503	25L	24V	0.7	3	17

Pump curves



Dimensional drawings(mm)



More application: roof air cooler, bus & yacht air conditioner, etc..
More billowy flow to 35 L/M and higher water head to 9 Meter
TA60 pump is available, please freely contact us for detail!